



NATIONAL NURSE PRACTITIONER
RESIDENCY & FELLOWSHIP TRAINING
CONSORTIUM

TRACK TWO:

Established Fellowship/Residency Programs:
Expansion and Sharing Best Practices

Workshop 3:

Program Tools: Administrative Nuts and Bolts

Susanne J. Phillips, DNP, FNP-BC, FAANP, FAAN, Associate Dean - Clinical Affairs University of California Irvine, Sue & Bill Gross School of Nursing

Patricia M Vanhook, PhD, FNP-BC, FAAN, Professor, Associate Dean, Practice & Community Partnerships, East Tennessee University, FNP Residency Program Director

Moderator: Danielle Potter, MSN, APRN, FNP-C, APRN Residency Program Director, El Rio Health

Time: 2:15-3:10pm

LEARNING OBJECTIVES:

1. Participants will collaborate with seasoned postgraduate residency programs to determine Administrative Best Practices for their program
2. Participants will develop a deeper understanding of a postgraduate training program's administrative responsibilities and required resources
3. Participants will Identify at least one element, tool or resource in this presentation to develop into at heir postgraduate training program

Session Topics:

- Recruitment:
- Orientation:
- Evaluation:
- Contractual Agreements

Orientation and Onboarding

- Week 1 classroom orientation and community scavenger hunt
- Week 2 clinic special services orientation
- Week 3 Work with preceptor
- Week 4 Begin taking patients and external services rotation

Credentialing and Privileging

- Credentialing Packet provided to new provider while contract is being processed
- Privileging form and health attestation completed during week 1

Orientation and Evaluation

Skill Evaluation

- Self-assessment of skills
- Preceptor assessment at 3, 6, 9, and 12 months
- Self-evaluation at the end of the program



Clinical academic partners (Substance Use Disorder Focus):

- Overmountain Recovery-Comprehensive Outpatient SUD with MAT
 - <https://www.overmountainrecovery.org/>
- Woodridge Psychiatric Hospital-Inpatient Rehabilitation
 - <https://www.balladhealth.org/hospitals/woodridge-psychiatric-johnson-city>
- Frontier Health Magnolia Ridge
 - <https://www.frontierhealth.org/addiction-services/>

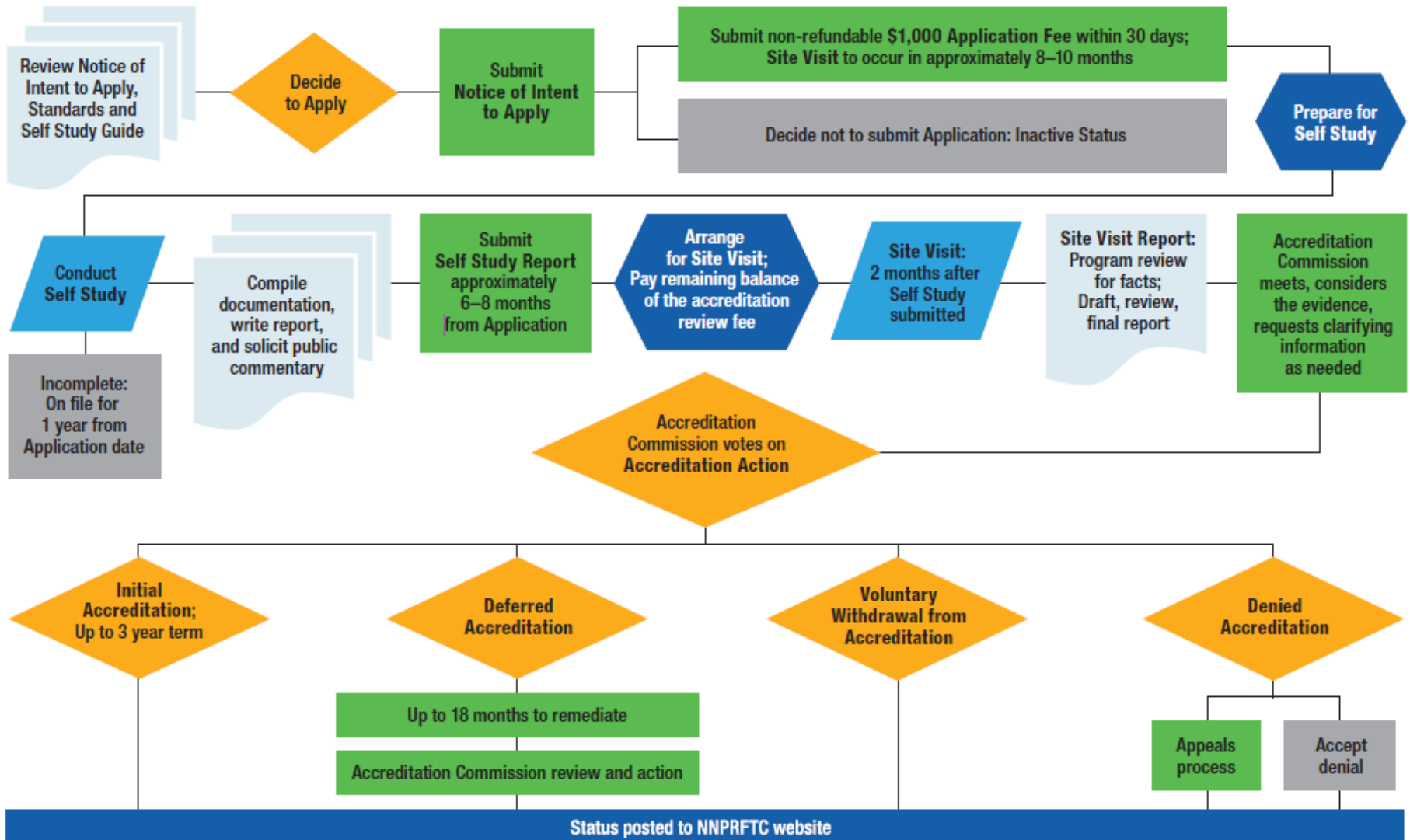
Accreditation

Begin with the end in mind

- [NNPRFTPC Accreditation Facts](#)
- [NNPRFTPC Timeline and Process](#) (includes link to facts, PowerPoint presentation, self-study guide, accreditation standards, fees, and site visit agenda)
- CCNE [NP Residency Standards](#) (DRAFT)



Initial Accreditation Process



- ANE-NPR Annual **REPORT**



- Create database to collect report elements through an ongoing process
- Consider including data elements on application

RESOURCES:

- APRN Residency Program – Resident Recruitment & Retention Policy & Procedures Manual
- Advanced Practice Registered Nurse (APRN) Residency Program – Resident Request to Terminate or Resign from Residency Policy
- Application Review
- Interviewing Packet- interviewer/applicant questions, instructions and scoring sheets